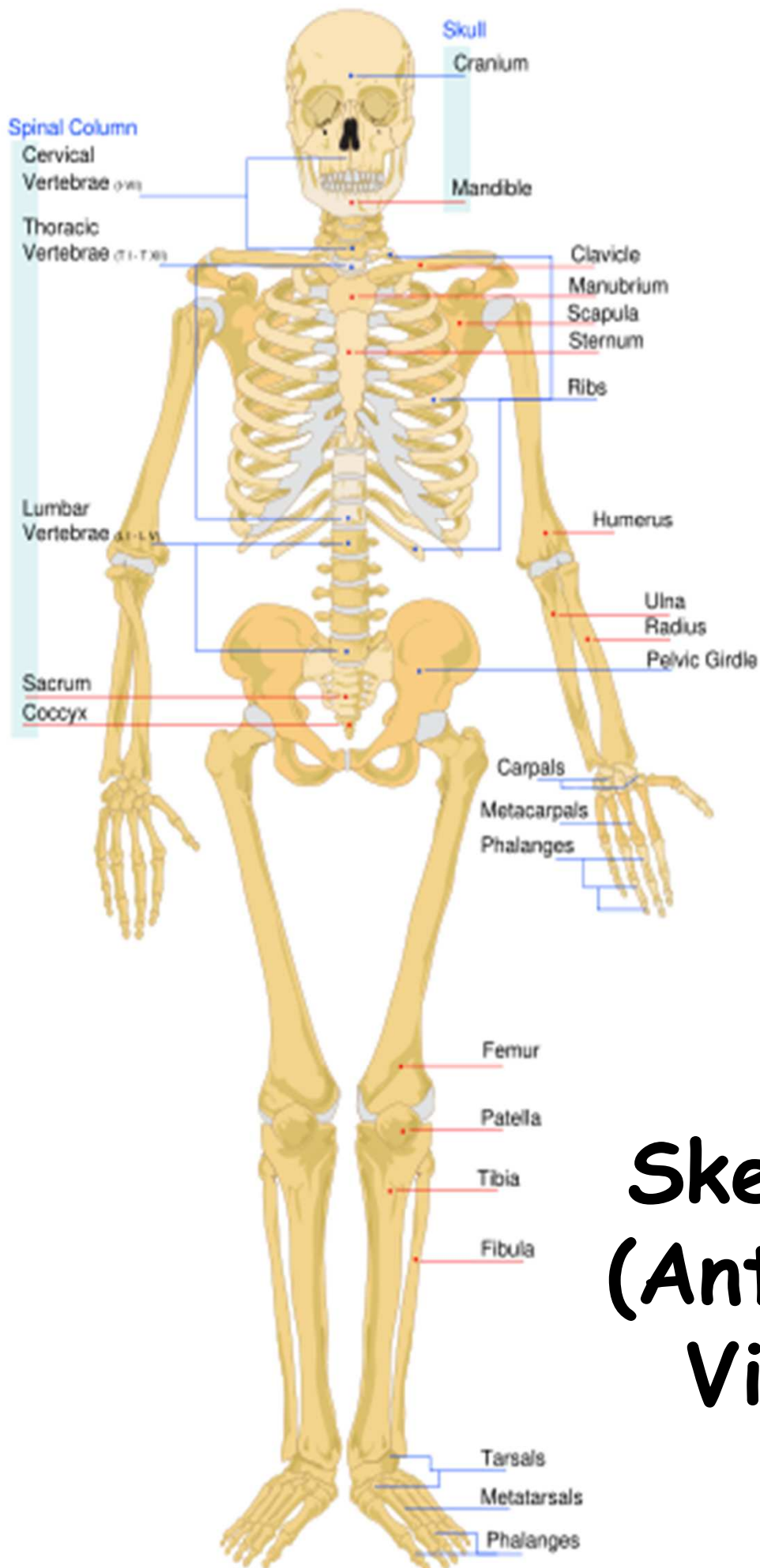
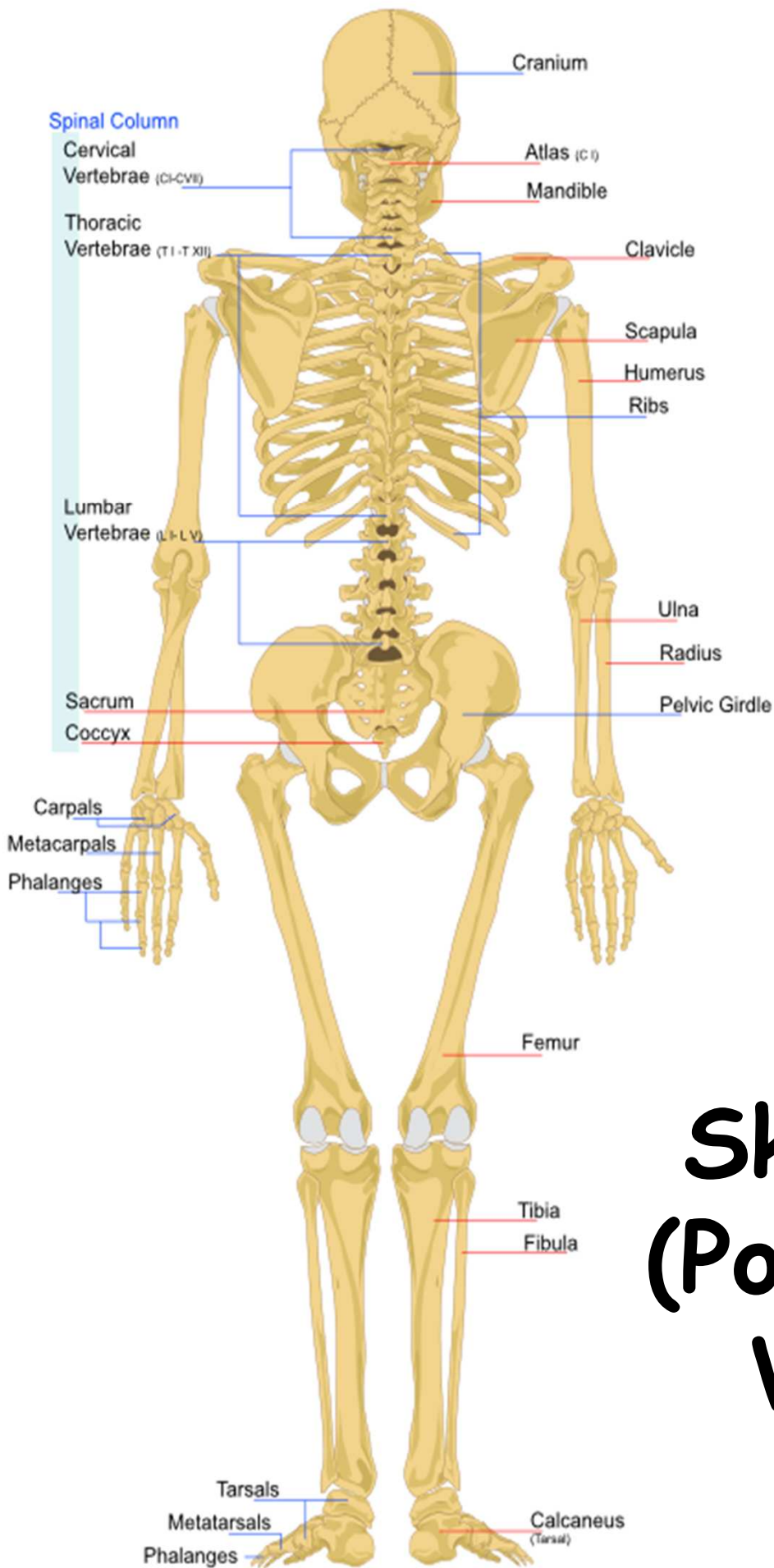
A blue-tinted X-ray of a human skull, showing the intricate structure of the bones. The text "The Human Skeletal System" is overlaid in a large, red, sans-serif font. The skull is positioned centrally, with the top of the head at the top and the jawline at the bottom. A small, rectangular, light-colored object is visible at the bottom center of the image, possibly a scale or a marker.

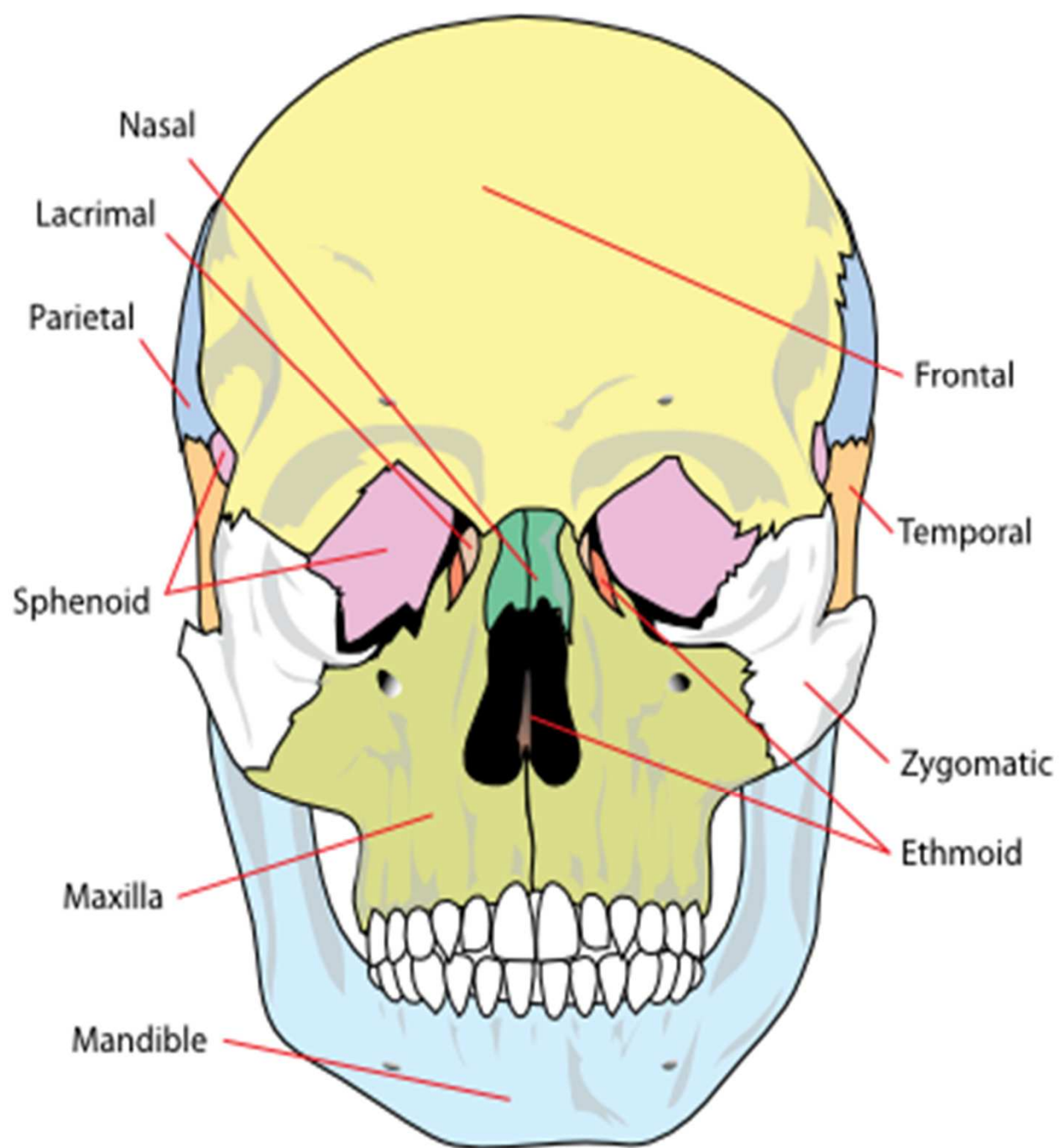
The Human Skeletal System

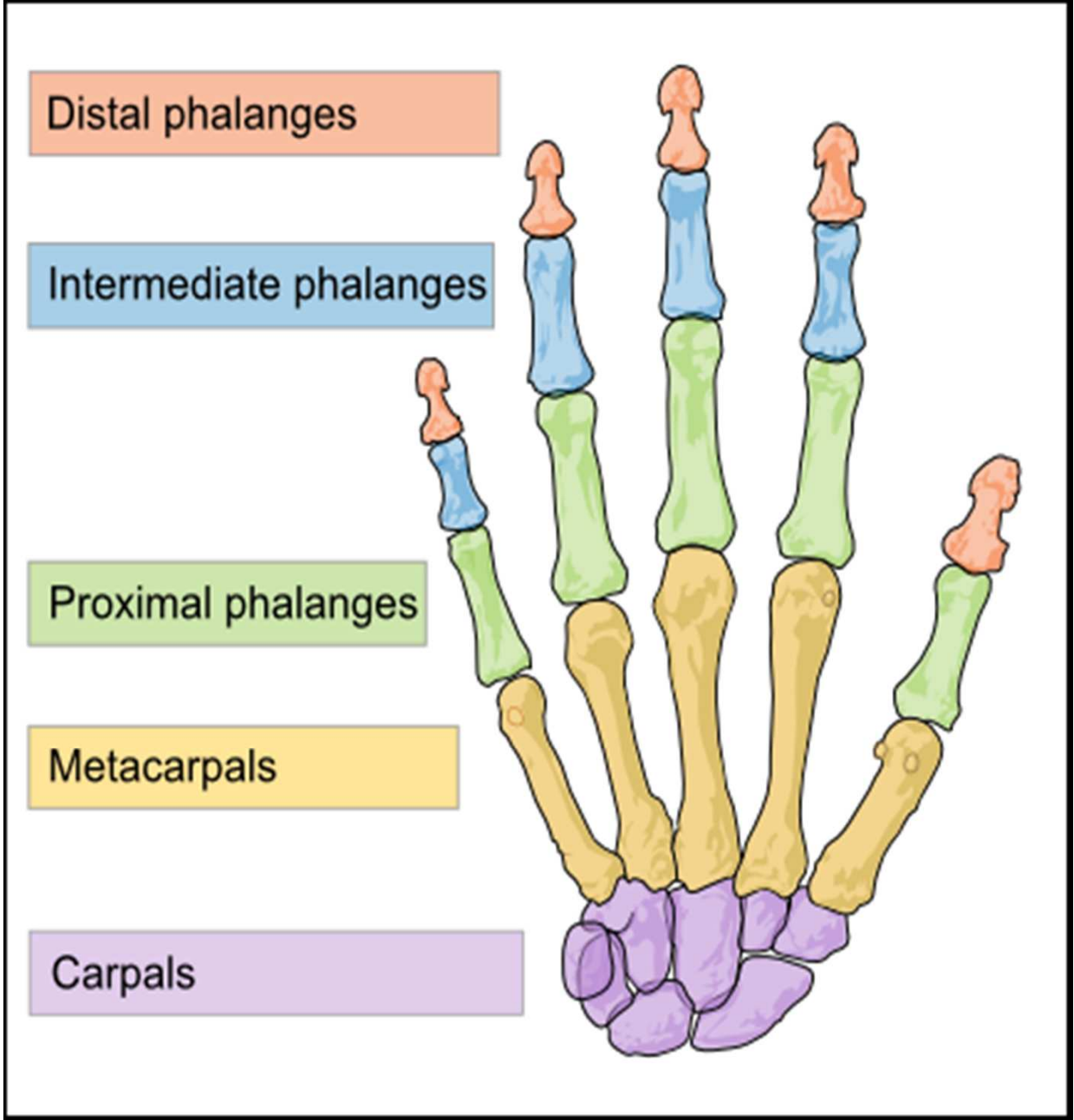


Skeletal (Anterior View)



Skeletal (Posterior View)





Distal phalanges

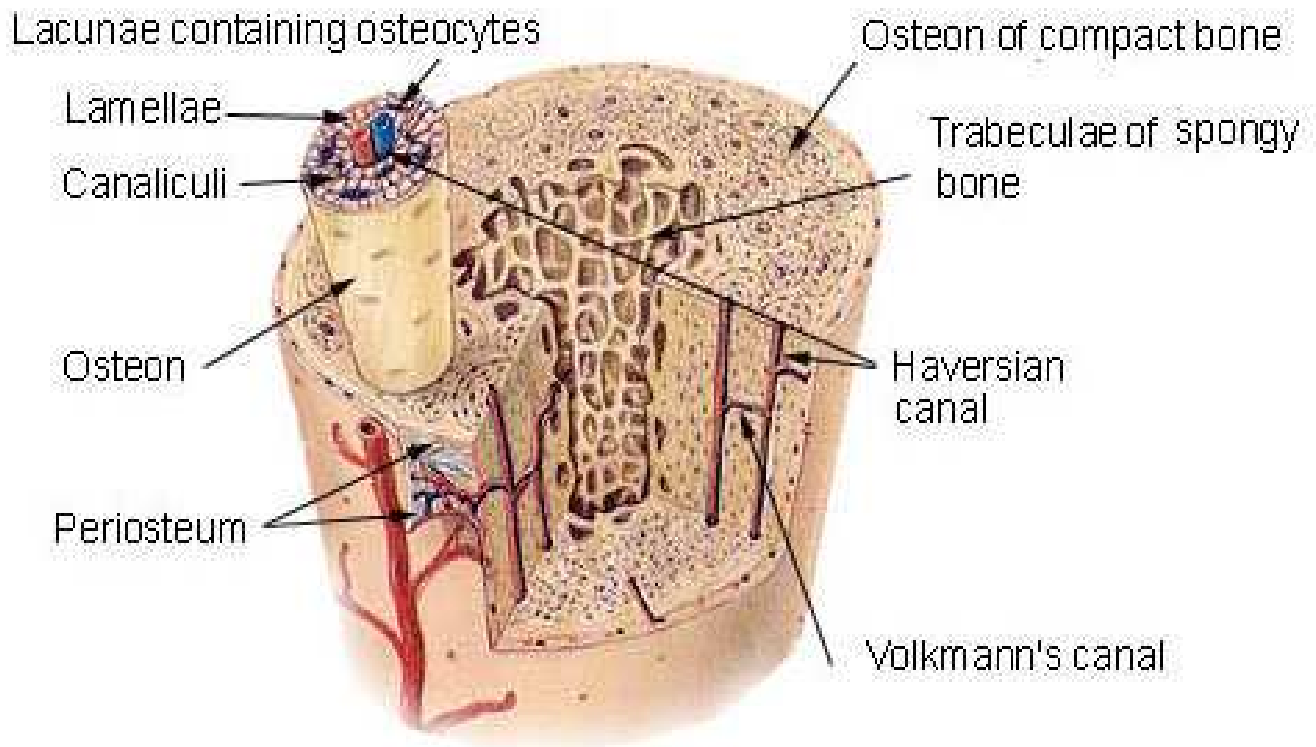
Intermediate phalanges

Proximal phalanges

Metacarpals

Carpals

Compact Bone & Spongy (Cancellous Bone)



❖ Bone as Living Tissue

- ❖ Bones have a blood supply
- ❖ Bones have nerves
- ❖ Bones store and manufacture
- ❖ Bones grow

❖ Bone Marrow

❖ Yellow Marrow

- ❖ Storage of fat in long bone shafts

❖ Red Marrow

- ❖ Production of red blood cells in soft bone ends (cancellous)

Joints

- **Immovable Joints**

- Bones separated by a thin layer of connective tissue
 - Bones of the skull

- **Slightly Movable Joints**

- Gaps between bones are held together by cartilage
 - Vertebrae

- **Freely Movable Joints**

- Bones are separated by a cavity
- Bones are held to other bones by ligaments
- Tendons hold muscles to bones
 - Hinge joint - Knees and elbows
 - Ball and socket joint - Hip and shoulder
 - Gliding joint - wrist and ankles